

MAJOR PLANT LIQUIDATION

Entire Copper & Brass Strip Mill Available

Continuous Casting Rolling Processing

Rolling Mills

26" (660mm) SENDZIMIR 20 HIGH REVERSING COLD MILL

Mfg. by Intergrated Industrial Systems 1999
Model No. ST9-26

Previous use: Brass, But Suitable for Copper, Carbon Steel, Stainless, & Titanium w/Modifications



- Automatic Gauge Control
- Solid Winders
- Mill Motor 800 HP
- Winder Motors 800 HP
- Coil Size 20" (508mm) ID x 65" (1651mm) OD
- Max. Strip Width 26" (660mm)
- Strip Gauge 0.003" (.08mm) to 0.160" (4mm)
- Max. Line Speed 2500/1250 FPM
- Max. Coil Wt. 21,840 Lbs.



Sale Managed by:



**MACHINERY INTERNATIONAL
CORPORATION**

10A Hershey Drive • Ansonia, CT 06401
Phone: 203-736-9000 / Fax: 203-736-9003
www.machyintl.com • sales@machyintl.com
Contact John Conroy / Steve McMillan



**NATIONAL MACHINERY
EXCHANGE, INC.**

72 Roanoke Avenue • Newark NJ 07105 USA
Phone: 973-344-6100 / Fax: 973-589-0944
www.nationalmachy.com • bob@nationalmachy.com
Contact Bob Dwyer

MAJOR PLANT LIQUIDATION

Rolling Mills

6" X 18" X 24" (154mm x 457mm x 609mm) GRISSET 2/4 HIGH REVERSING COLD MILL

Combination Mill - 2-Hi for Breakdown, 4-Hi Mill for Finish Rolling, Max. Strip Width 21.5"(546mm), Thickness Range for Brass: 2-Hi Mode 0.80"(20mm)-0.08"(2mm), 4-Hi Mode 0.160"(4mm)-0.025"(.6mm), Roll Size: 2-Hi 18"(457mm) Dia. x 24"(609mm) Face, Work Roll Size 6"(152mm) x 24"(609mm), Equipped with Hydraulic Automatic Gauge Control, Vollmer Contact Gauges, Wenco Winders with 20"(508mm) Face, Winder Motor 120 Kw, Mill Motor 582 Kw

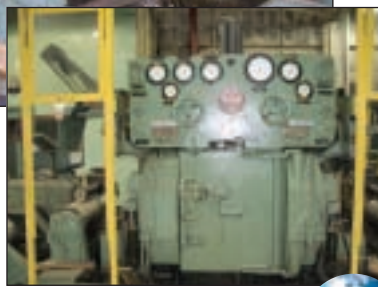


All Specs Subject to Physical Inspection Verification



ZR33-13 WATERBURY FARREL SENDZIMIR 20 HIGH REVERSING COLD ROLLING MILL

Max. Strip Width 14.25"(361mm), Material Thickness 0.090"(2mm) to 0.003"(.08mm), Rolling Speed 350/500 FPM, Solid Block Winders 16"(406mm) Dia. x 16"(406mm) Face, Mill Motor 125 HP, Winder Motors 50 HP



MACHINERY INTERNATIONAL CORPORATION

Phone: 203-736-9000 / Fax: 203-736-9003
www.machyintl.com • sales@machyintl.com



NATIONAL MACHINERY EXCHANGE, INC.

Phone: 973-344-6100 / Fax: 973-589-0944
www.nationalmachy.com • bob@nationalmachy.com

MAJOR PLANT LIQUIDATION

Continuous Casting Lines

20-3/4" (527mm) METATHERM TWIN STRAND STRIP CASTING LINE

Horizontal, Max. Coil Wt. 15,000 Lbs., Strip Thickness Min. 0.500" (12mm), Max. 0.720" (18mm), Casting Speed 6.6 IPM, Cast One or Two Strands, Min. 2 x 14.6" (370mm), Max. 1 x 20.75" (527mm) With Ajax Magnathermic 450 Kw Induction Melting Furnace, Holding Furnace, Withdrawal Unit, Crop Shear, Dual Upcoilers



20-3/4" (527mm) METATHERM SINGLE STRAND CASTER

Horizontal, Max. Coil Wt. 15,000 lbs., Strip Thickness Min. 0.500" (12mm), Max 0.720" (18mm), Casting Speed 6 IPM (152mm/MIN) With Ajax Magnathermic Induction Furnace, Shaker Table, Holding furnace, Withdrawal Unit, Crop Shear, Upcoiler



MACHINERY INTERNATIONAL CORPORATION

Phone: 203-736-9000 / Fax: 203-736-9003
www.machyintl.com • sales@machyintl.com



NATIONAL MACHINERY EXCHANGE, INC.

Phone: 973-344-6100 / Fax: 973-589-0944
www.nationalmachy.com • bob@nationalmachy.com

MAJOR PLANT LIQUIDATION

Continuous Casting Lines, cont.

21-1/2" (546mm)

TECHNICA- GUSS HORIZONTAL SINGLE STRAND CASTER

Max. Coil Wt. 15,000 Lbs., Min. Strip Width 14.6" (370mm), Max. 21.5" (546mm), Casting Speed 6.5 IPM, Thickness 0.500" (12mm) to 0.720" (18mm), Ajax Magnathermic Induction Melting Furnace, Holding Furnace, Crop Shear, Withdrawal Unit, Upcoiler



Strip Milling Line

TORRINGTON STRIP MILLING LINE

- Mill Cutting Width 24" (609mm)
- Max. Strip Thickness of 0.700" (17mm)
- Line Consists of:**
 - Leveler
 - 2 Shears
 - Left & Right Edge Cutters, 10" (254mm) Dia.
 - Entry Pinch Rolls to Cutter
 - Upper & Lower Milling Stations, 10 HP Each
 - Upcoiler
 - Milling Cutters 9" (228mm) Dia. x 27" (685mm) Face

ALSO AVAILABLE:



SETCO CUTTER GRINDER MOD. SMGY-34 (2 AVAILABLE)



All Specs Subject to Physical Inspection Verification

Please Call to Set Up Inspection Appointment



MACHINERY INTERNATIONAL CORPORATION

Phone: 203-736-9000 / Fax: 203-736-9003
www.machyintl.com • sales@machyintl.com



NATIONAL MACHINERY EXCHANGE, INC.

Phone: 973-344-6100 / Fax: 973-589-0944
www.nationalmachy.com • bob@nationalmachy.com

MAJOR PLANT LIQUIDATION

Bell Annealing Furnaces



RAD-CON BELL ANNEALING FURNACE
NEW 2001

- 92"(2336mm) Dia. x 132"(3352mm) High Charge Size
 - Charge Weight 80,000 Lbs.
 - Annealing Temp 800°C Max.
 - Annealing Atmosphere Hydrogen or Nitrogen
- Consisting of: One Furnace, Two Bases, Two Inner Covers, One Cooling Bell



RAD-CON BELL ANNEALING FURNACE
NEW 1993

- 62"(1574mm) Dia. x 114"(2895mm) High Charge Size
 - Charge Weight 60,000 Lbs.
 - Annealing Temp 800°C Max.
 - Annealing Atmosphere Hydrogen or Nitrogen
- Consisting of: One Furnace, Two Bases, Two Inner Covers, One Cooling Bell



RAD-CON BELL ANNEALING FURNACE
NEW 1998/2001

- 62"(1574mm) Dia. x 132"(3352mm) High Charge Size
 - Charge Weight 80,000 Lbs.
 - Annealing Temp 800°C Max.
 - Annealing Atmosphere Hydrogen or Nitrogen
- Consisting of: Three Furnaces, Five Bases, Five Inner Covers, Three Cooling Bells



LEE WILSON BELL ANNEALING
FURNACE CELL

- 89"(2260mm) Dia. x 66" (1676mm) High Charge Size
 - Gas Fired
 - Charge Weight 45,000 Lbs. (Est.)
 - Annealing Temp 800°C Max. (Est.)
 - Annealing Atmosphere Nitrogen
- Consisting of: Two Furnaces, Four Bases, Four Inner Covers

ALSO AVAILABLE:

LEE WILSON BELL
ANNEALING FURNACE

66"(1676mm) Dia. x 42"(1066mm) High Charge Size, Gas Fired, Charge Weight 30,000 Lbs. (Est), Annealing Temp 800°C Max. (Est.), Annealing Atmosphere Nitrogen, Consisting of: One Furnace, Three Bases, Three Inner Covers



MACHINERY INTERNATIONAL CORPORATION

Phone: 203-736-9000 / Fax: 203-736-9003
www.machyintl.com • sales@machyintl.com



NATIONAL MACHINERY EXCHANGE, INC.

Phone: 973-344-6100 / Fax: 973-589-0944
www.nationalmachy.com • bob@nationalmachy.com

MAJOR PLANT LIQUIDATION

Wesero Cleaning Line

WESERO CLEANING LINE

Capacity:

- Strip Width 12"(304mm) to 26"(660mm)
- Strip Thickness (Brass) .008"(2mm) to .160"(4mm)
- Line Speed 0-200 FPM
- Coil Size 20"(508mm) ID
- Coil Weight 17,600 Lbs.
- Brush Degreaser
- Cold Rinse Pickle Spray Tank 10' Long
- Strip Dryer
- Inspection Table
- Crop Shear
- Most Components New in 1998



Slitting Line

RUESCH SLITTING LINE

Slitting Arbor: 4-1/8"(104mm) Dia. x 26"(660mm) Wide

Strip Thickness (Brass) 0.025"(.6mm) to 0.153"(3mm), Max. Strip Width 25"(635mm), Max. Coil OD 60"(1524mm), Max. Coil Weight 15,000 Lbs., Line Speed 0-500 FPM, 2 Scrap Winders, Slitter Drive Motor 50 HP DC, with SCR Rectifier, Entry and Exit Coil Car, Exit Turnstile



All Specs Subject to Physical Inspection Verification – Please Call to Set Up Inspection Appointment



MACHINERY INTERNATIONAL CORPORATION
Phone: 203-736-9000 / Fax: 203-736-9003
www.machyintl.com • sales@machyintl.com



NATIONAL MACHINERY EXCHANGE, INC.
Phone: 973-344-6100 / Fax: 973-589-0944
www.nationalmachy.com • bob@nationalmachy.com

MAJOR PLANT LIQUIDATION

Miscellaneous Equipment

All Specs Subject to Physical Inspection Verification – Please Call to Set Up Inspection Appointment



10" X 48" (254mm x 1219mm)
NORTON ROLL GRINDER



14" X 48" (355mm x 1219mm)
NORTON ROLL GRINDER



COIL REWIND LINE (2 AVAILABLE)



SCRAP BALER CHARGING BOX 44" (1117mm) X 96" (2438mm) x 22" (558mm) DEEP



MACHINERY INTERNATIONAL CORPORATION

Phone: 203-736-9000 / Fax: 203-736-9003
www.machyintl.com • sales@machyintl.com



NATIONAL MACHINERY EXCHANGE, INC.

Phone: 973-344-6100 / Fax: 973-589-0944
www.nationalmachy.com • bob@nationalmachy.com



**NATIONAL MACHINERY
EXCHANGE, INC.**

72 Roanoke Avenue • Newark NJ 07105 USA
Phone: 1-973-344-6100 / Fax: 1-973-589-0944



PRSR STD
U.S. POSTAGE
PAID
TADE PUBLISHING

**ULTRA MODERN 20 HIGH
REVERSING COLD MILL
EQUIVALENT TO ZR 23-26
LIKE NEW CONDITION**

ROUTE TO:

- Plant Manager
- Chief Engineer
- Purchasing Manager



MAJOR PLANT LIQUIDATION
Entire Copper & Brass Strip Mill Available
Continuous Casting Rolling Processing
Waterbury
Rolling Mills

Waterbury, CT

**Call For Appointment
to Inspect.**

Sale Managed by:



**MACHINERY INTERNATIONAL
CORPORATION**

10A Hershey Drive • Ansonia, CT 06401
Phone: 203-736-9000 / Fax: 203-736-9003
www.machyintl.com • sales@machyintl.com



**NATIONAL MACHINERY
EXCHANGE, INC.**

72 Roanoke Avenue • Newark NJ 07105 USA
Phone: 973-344-6100 / Fax: 973-589-0944
www.nationalmachy.com • bob@nationalmachy.com